

Breast Cancer Screening for Women with Dense Breasts, High Risk Factors

Wendie Berg, MD, PhD, FACR

Magee-Womens Hospital of the University of Pittsburgh Medical Center
University of Pittsburgh School of Medicine




Breast cancer is more easily and less expensively treated if found early. For some women, mammograms alone are not enough to detect their breast cancer.

Women with an increased risk for breast cancer, including women with dense breasts may need additional screenings such as ultrasound and MRI. About *half of cancers* present

are missed on a mammogram in women with dense breast tissue.

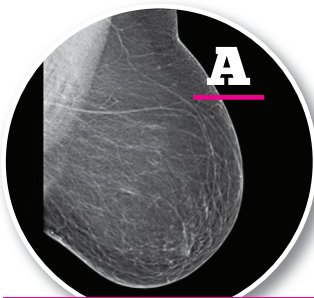
Women with dense breasts are also more likely to develop breast cancer. 3D mammography (tomosynthesis) improves detection of early breast cancer in most women, but not in those with extremely dense breast tissue. About 43 percent of women undergoing screening mammography have dense breasts,

including 7 percent with extremely dense breasts.

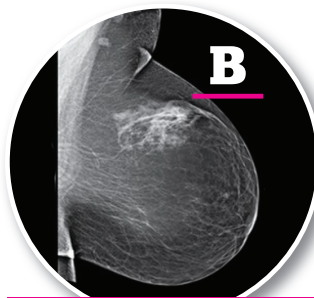
MRI greatly improves breast cancer detection and is recommended for women at high risk based on personal history of breast cancer, family history, disease-causing gene mutations, or other factors. Ultrasound can be considered in women with dense breasts not able to have MRI. 

4 LEVELS of BREAST DENSITY

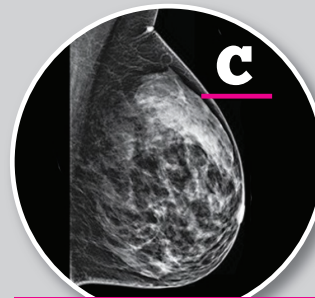
© DenseBreast-Info.org and Wendie Berg, MD, PhD



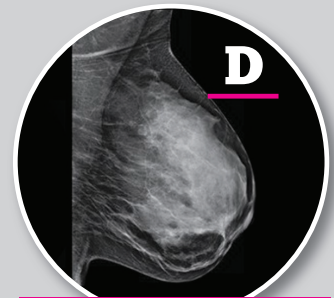
Fatty



Scattered



Heterogeneously Dense



Extremely Dense

- ▶ 13% of women
- ▶ 86-98% of cancers present detected on mammogram

- ▶ 43% of women
- ▶ 78-90% of cancers present detected on mammogram

- ▶ 36% of women
- ▶ may obscure small masses
- ▶ 70-83% of cancers present detected on mammogram

- ▶ 7% of women
- ▶ lowers the sensitivity of mammography
- ▶ 61-65% of cancers present detected on mammogram